

2J664B

(Datasheet)

Type	GSM antenna
Frequencies	AMPS (824-894 MHz) GSM (900 MHz) DCS (1800 MHz) PCS (1900 MHz) 3G (UMTS 2.1 GHz) WIFI / BLUETOOTH (2.4 GHz)
Mounting	Body Mount
Revision	00



P. Tipul



D. Noble

1. SPECIFICATION

1.1. Electrical Specifications

Frequencies	AMPS (824-894 MHz) ISM (868 MHz) GSM (900 MHz) DCS (1800 MHz) PCS (1900 MHz) 3G (UMTS 2.1 GHz) WIFI / BLUETOOTH (2.4 GHz)
Impedance	50 Ohms
Polarization	Linear
Gain*	2.2 dBi Avg.
VSWR**	<2.6:1
Operating temperature	-40°C to +85°C
IP/IK ratings	IP69K, IK09

*Antenna gain depend on size of the ground plane

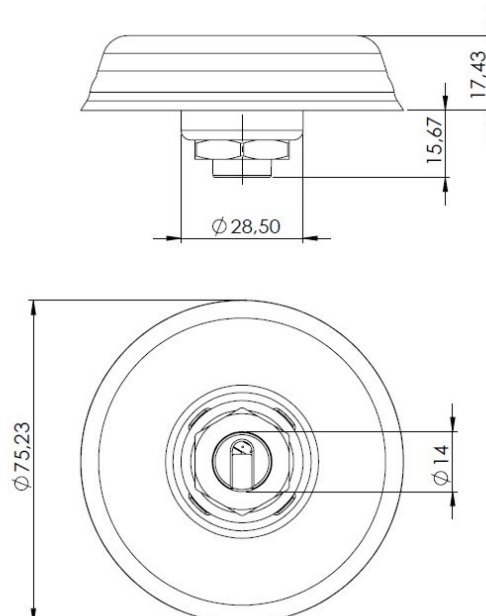
**SWR stated when measured with 2.5m RG174 on 50x50cm ground-plane

1.2. Connection Specifications

Connector type: FME female
Cable: RG174U
Cable length: 250 cm

1.3. Mechanical Specifications and Dimensions

Material: Lid: ABS / Base: Zamak / Gasket: TPE
Dimensions: 77.4mm x 15.9mm (dimensions after mounting)
Weight: 150 g (counted with 2.5m cable RG174)
Colour: Black (for different colours please ask our sales team)



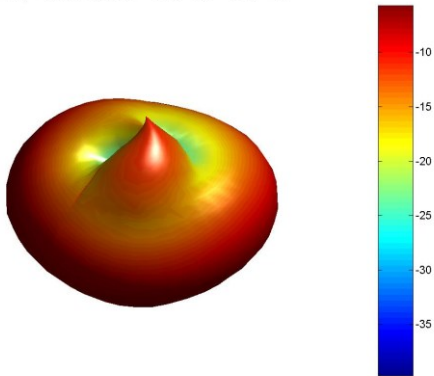
2. MEASUREMENT

2.1. Test Condition

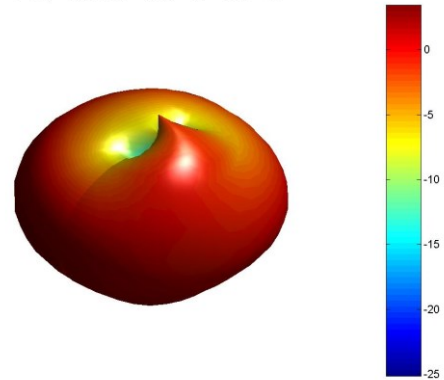
- 25cm x 25cm ground-plane
- Tested in anechoic chamber
- Cable length 30cm

2.2. Electrical Characteristics

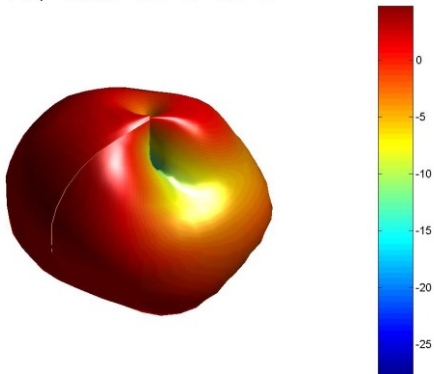
850MHz
Freq = 0.8500GHz Az= 45 EL= 45



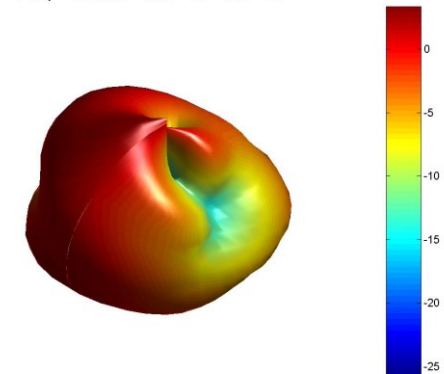
900MHz
Freq = 0.9GHz Az= 45 EL= 45



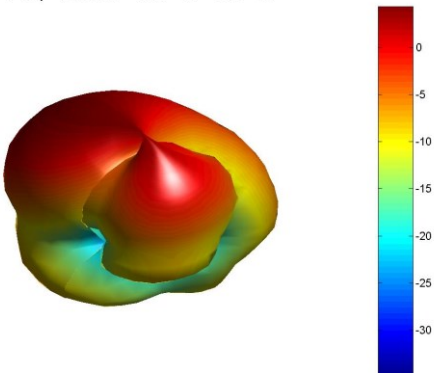
1800MHz
Freq = 1.8GHz Az= 45 EL= 45



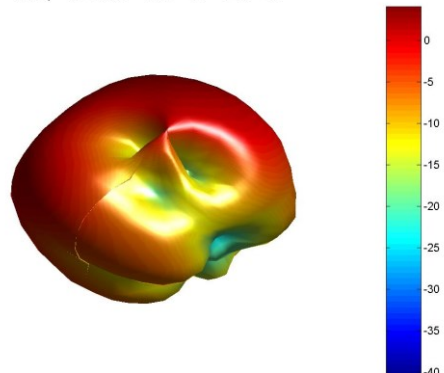
1900MHz
Freq = 1.9GHz Az= 45 EL= 45



2100MHz
Freq = 2.1GHz Az= 45 EL= 45

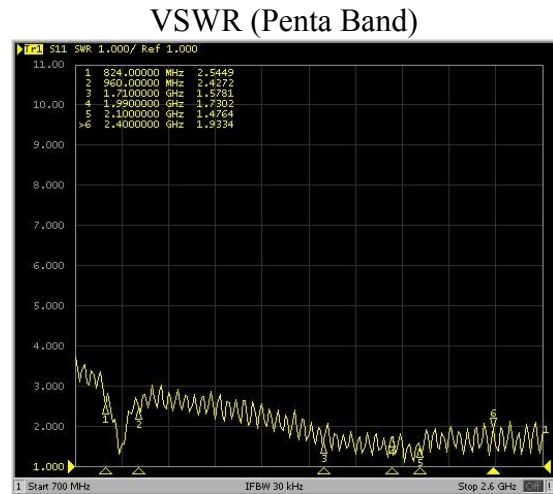
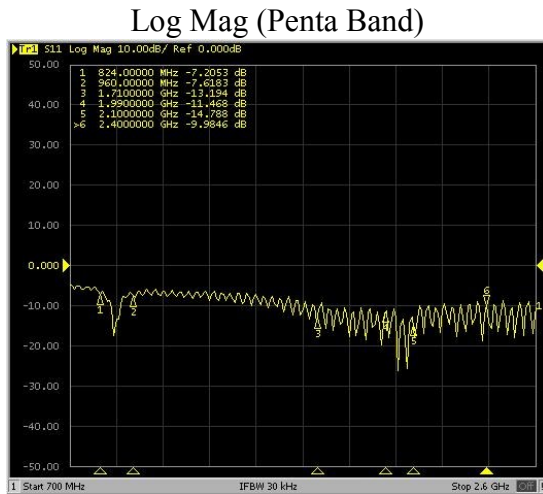


2400MHz
Freq = 2.4GHz Az= 45 EL= 45



2.3. S11

- Tested with 2.5m cable length on 50 cm x 50 cm ground plane.



3. IMAGES

