



GWR WIDE VOLTAGE

CELLULAR ROUTER SERIES GPRS/EDGE/UMTS/HSPA+

Wide Voltage GWR Router Series is designed to provide remote connectivity over cellular networks especially for customers who require a power supply from 9 to 36 VDC. Low transmission delay and very high data rates offered by existing cellular networks completely eliminate the need for expensive wired infrastructure. GWR series brings scalability of even most demanding corporate networks to the highest possible level. Installing a reliable, high performance backup solution for existing land lines or satellite networks is now a simple task thanks to modern cellular networks. Therefore, no matter if the goal is to provide primary internet access or backup solution for already existing network GWR router series represents a top rated solution.

Many useful features make GWR routers a perfect solution for wide variety of applications:

- Dual SIM card support increases the reliability of the router and provides a solution for those applications where failure of one mobile network must not result in system downtime.
- The whole set of advanced WAN settings allows the user to specify desired parameters in order to meet the requirements of specific cellular network. GWR routers proved themselves to be reliable and high performance devices in many countries around the world.
- VPN (GRE, IPsec and OpenVPN) tunnel support provides powerful options for network expansion and secures data transfer over the cellular network.
- With Serial-to-IP feature it is possible to connect, control and perform data acquisition from almost any device with serial RS232 port. In addition to this feature, GWR router series implements ModbusRTU-to-ModbusTCP functionality designed to support expansion of Modbus SCADA networks over the cellular networks.
- Easy to use web interface, extended CLI (Command Line Interface), detailed log, SMS control feature, partial and full configuration Export/Import and remote management and monitoring software provide wide range of management functionalities. All those features and tools empower a user with full control over GWR routers.

Typical Application

Data collection and system supervision

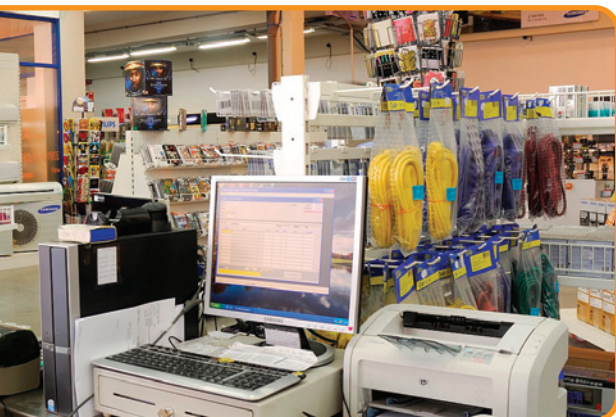
- Extra-high voltage equipment monitoring
- Running water, gas pipe line supervision
- Centralized heating system supervision
- Environment protection data collection
- Flood control data collection
- Alert system supervision
- Weather station data collection
- Power Grid
- Oilfield
- Light Supervision
- Solar PV Power Solutions

Financial services and retail

- Connection of ATM machines to central site
- Vehicle based bank service
- POS
- Vending machine
- Bank office supervision
- Information kiosks

Other

- Remote Office Solution
- Remote Access Solution



Technical specifications

RF characteristics - GSM/GPRS/EDGE/UMTS/HSPA+

UMTS/HSPA+

900/2100 MHz or 850/1900/2100 MHz

(Huawei modules, depending on the model)

900/2100 MHz (Cinterion module)

Transfer rate (max): 21.6 or 14.4 Mbps down, 5.76 Mbps up (depending on the model)

Note: UMTS/HSPA+ transfer rate limited to 12 MBps due to USB 1.1 Full Speed interface limitations

GSM/GPRS/EDGE

850/900/1800/1900 MHz (Huawei module)

Transfer rate (max): 236.8 Kbps down, 236.8 Kbps up

900/1800 MHz (Cinterion module)

Transfer rate (max): 384 Kbps down, 384 Kbps up

Important note: All DL/UL speeds are given as speeds defined by standards. Actual speeds may vary and are not guaranteed.

Interfaces and connectors

- 1x embedded interface GSM/GPRS/EDGE/UMTS/HSPA+
- Dual SIM slots with protective cover (Push-Pull)
- GSM: 1xSMA female connector (50 Ω) for external antenna
- 1 x Ethernet interface 10/100 Base-T, RJ-45 connector
- 1 x Serial RS-232 interface, Pinout 1: RTS, 2: DTR, 3: TX, 4: GND, 5: GND, 6: RX, 7: DSR, 8: CTS
- 1 x USB Host 1.1 interface, full speed 12 MBps, connector type A

Status LED

- Ethernet activity/network traffic
- Power on
- GSM link activity
- GSM signal strength (5 LED's)
- Reset

Power requirements

- Input: 9-36VDC / 1000mA
- AC Power Supply: 100-240 VAC 50/60 Hz, standard temperature range
- (optional: extended temperature range)

Environmental

- Operating temperature: -40° C to +75° C
- Storage temperature: -40° C to +85° C
- Relative humidity: 5% to 95% (non-condensing)
- IP rating: IP30

Housing

- Robust steel sheet 0.8 mm, optional DIN rail mounting kit

Dimensions and weight

- Dimensions (W x D x H): 95 x 135 x 35 mm
- Weight: 380 gr

Management

GWR connection wizard, Command Line Interface on serial console, telnet and SSH, Web application (HTTP based), Remote management and monitoring software, SMS control, Detailed system log, Default reset, Firmware upload, Partial or full configuration Export/Import

Protocols and features

Network

DHCP server, RIP, Port forwarding, DMZ support, SNMPv1,2c, DynDNS, NTP, Firewall (NAT, PAT, IP filtering), Serial-to-IP, ModbusRTU-to-ModbusTCP

VPN

GRE, GRE Keepalive, IPsec pass-through, IPsec main/aggressive, Data integrity (HMAC-MD5, SHA-1, Authentication and key management), IKE, manual keys, IKE features (Perfect Forward Secrecy, Auth-Method PSK, Identify IP address, DPD for constant connection, Automatic NAT-T behind NAT, Initiator and responder), IPsec tunnel failover, OpenVPN, PPTP, L2TPv3

QMS ISMS 
ISO 9001:2015 ISO/IEC 27001:2014

Ordering Information

	HSPA+	RS-232	USB	Eth port
GWR352WV-X	•	•	•	1

-X at the end of Part Number denotes GSM module. Following manufacturers are available: C - Cinterion (Gemalto), H - Huawei

CONTACT US

Geneko Sales Team
e-mail: gwrsales@geneko.rs

Geneko Support Team
e-mail: gwrsupport@geneko.rs

www.geneko.rs

Bul. Despota Stefana 59a
11000 Belgrade • Serbia
Phone: +381 11 3340-591, 3340-178
Fax: +381 11 3224-437