

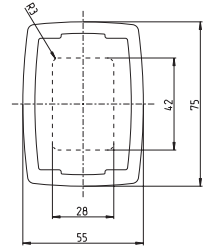
Tubes

	Standard lengths (available from stock)	Article number	Tube cross sections
--	--	----------------	---------------------

CS-3000 neXt Aluminium connection section



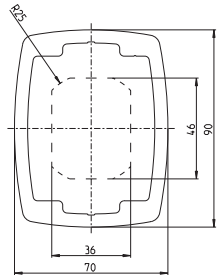
Length 55 x 75 x 250 mm	9524700001
Length 55 x 75 x 500 mm	9524700002
Length 55 x 75 x 750 mm	9524700003
Length 55 x 75 x 1000 mm	9524700004
Length 55 x 75 x 1250 mm	9524700005
Length 55 x 75 x 1500 mm	9524700006



CS-3000 Aluminium connection section



Length 70 x 90 x 250 mm	9524500001
Length 70 x 90 x 500 mm	9524500002
Length 70 x 90 x 750 mm	9524500003
Length 70 x 90 x 1000 mm	9524500004
Length 70 x 90 x 1250 mm	9524500005
Length 70 x 90 x 1500 mm	9524500006
Length 70 x 90 x 1750 mm	9524500007
Length 70 x 90 x 2000 mm	9524500008



Tubes machined at one end
(machining templates supplied, available from stock)

Length 70 x 90 x 1000 mm	9524500009
Length 70 x 90 x 2000 mm	9524500010

If one of our standard lengths does not suit your requirements, we can also supply tubes machined at one end. Simply shorten to the required length and use the supplied template to machine the shortened end.

Machined tubes to required lengths

We can also supply completely machined tubes to the length you require (price and delivery time on request). Or use our Express Service.

Express Service

Round aluminium tubing

Round aluminium tubes in different lengths. We can also supply completely machined tubes to the length you require. (Prices and delivery time on request)



Length 48 x 4 x 250 mm	9521400000
Length 48 x 4 x 500 mm	9521401000
Length 48 x 4 x 750 mm	9521402000
Length 48 x 4 x 1000 mm	9521403000

