



**Robust and durable for arduous
production environments**

Industrial Workstation WS-6000

Unshakeable: Bernstein Industrial Work

On paper, all industrial workstations can cut a fine figure. But often when placed in difficult operating conditions they fail to deliver the necessary level of success. The new WS-6000 from Bernstein not only looks good, but has the intrinsic qualities required to deliver outstanding performance and reliability: With robust steel lower cabinets and solid aluminium control housings, it provides permanent and dependable protection for sensitive control electronics in arduous production environments. Whether the threat is from vibration, impact, dust or moisture - the WS-6000 is unshakeably impressive with its well conceived, unique ergonomics. With numerous possible variations and a wide range of accessories, the WS-6000 from Bernstein offers the

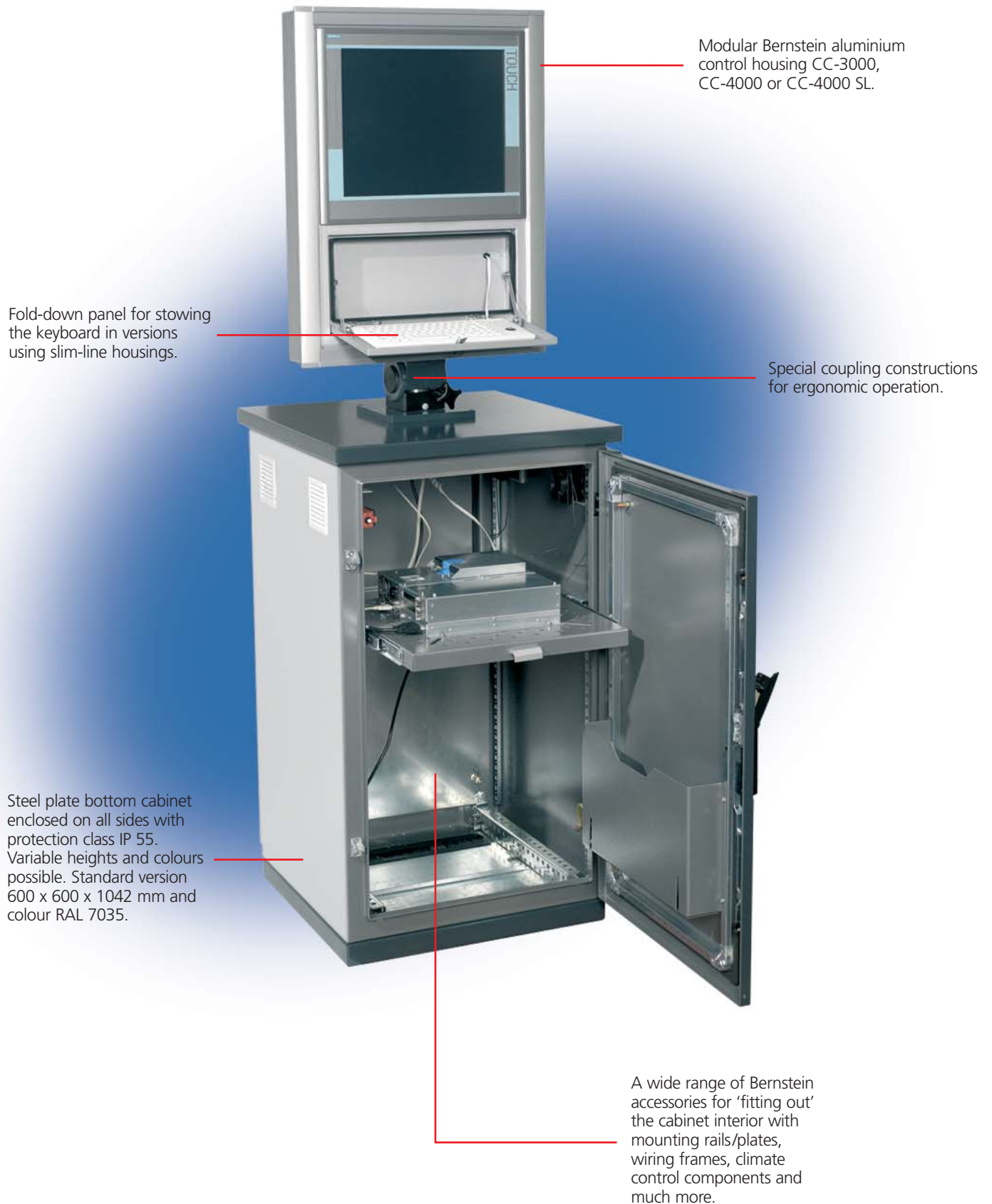
tailor-made solution for your demanding applications: e.g. for system controllers, as a QA workplace or a signalling stand.

- A coordinated system in terms of both design and configuration
- Sheet steel and aluminium design
- Protection type IP 65 (bottom cabinet IP 55)
- Perfect ergonomics
- Compact size
- Easy-to-service design
- Flexible concept for tailor-made solutions
- A wide range of accessories
- A complete solution from a single source
- Superior economy



Design strips and worktops in all RAL colour tones allow adaptation to individual company standards.

station WS-6000



Modular control housing



With the proven series CC-3000 and CC-4000 aluminium control housings, the Bernstein WS-6000 offers a wide variety of solutions for accommodating control panels, visualisation units and IPCs. Thanks to the modular design, the control housings are extremely well suited for customer-specific solutions. This allows the width and height of the housing to be freely selected for the configuration. To obtain the required housing depth, housing bodies of various depths are simply combined: This means that with the CC-3000, finely graduated installation depths of 103 mm to 246 mm are possible, and depths of 80 mm to over 600 mm are possible with the CC-4000.

Since all housing profiles have internal fixing grooves, components can be simply fitted with the provided spring nuts without any additional machining. The solution for securing the internal front panels is just as practical, with the quick assembly system enabling the front panel to be inserted directly (also without machining).

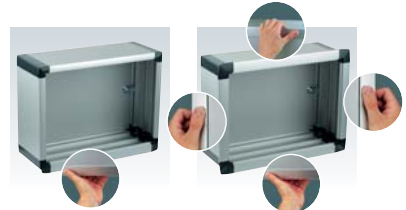
A wide range of accessories and many ergonomic solutions are available for the control housing of the Bernstein WS-6000, which support safe and fatigue-free working.



CC-3000 light weight control housing

- Modular aluminium housing concept for realising customer-specific sizes (recommended up to max 600 x 600 x 255 mm)
- Modern industrial design with family characteristics
- Design with or without handle elements - allows up to five possible different front designs
- Front panel installation possible from the inside or the outside – the advantage of a quick assembly technique for installation from the inside
- Particularly good heat dissipation thanks to single-wall profiles
- Direct installation possible for many controllers available on the market
- Internal grooves for simple fastening using spring nuts
- Colour design possible in almost all RAL tones
- Standard protection type IP 65

5 different design variants are possible:
without handles, handle at the bottom
only, handles on the left and right,
handles on the right, left and bottom,
handles all round



CC-4000 Control housing

- Modular aluminium housing concept for realising customer-specific sizes (recommended up to max 800 x 800 x 646 mm)
- Modern industrial design with family characteristics
- Front panel installation possibility from the inside or the outside – the advantage of a quick assembly technique for installation from the inside
- Particularly good heat dissipation thanks to single-wall profiles
- Great variability in passive cooling thanks to optional external ribs
- Direct installation possible for many controllers available on the market
- Internal grooves for simple fastening using spring nuts
- Colour design possible in almost all RAL tones
- Standard protection type IP 65

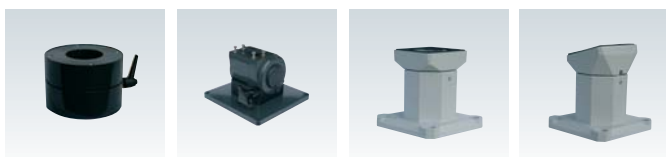
The optional external ribs
allow additional optimisa-
tion of the passive heat
dissipation



Special coupling systems



Depending on the requirements, various coupling systems can be utilised for connecting the control housing and the bottom cabinet. Each coupling has its own special properties. The rotary tilting coupling for example offers the best possible ergonomics with full variability in the position of the control housing. In the case of the rotary coupling, the special design suppresses the chimney effect and dust and heat from the bottom cabinet cannot enter the control housing. The two stand couplings on the other hand are recommended for especially narrow panel housings.



Four coupling systems are available:
rotary coupling, rotary tilting coupling,
base bracket coupling, angled base
bracket coupling

Highly effective heat dissipation



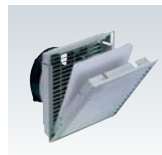
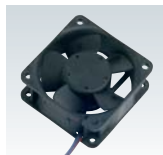
The more powerful the computer, the more heat it produces. If the electronics are enclosed, this means that a risk of overheating arises very quickly. To effectively prevent temperature damage of sensitive components, the control housing and the bottom cabinet can be fitted with various systems for both passive and active heat dissipation.

In order to provide the best possible conditions for effective cooling, great emphasis was placed on the passive heat dissipation properties during the design of WS-6000, with the aluminium control housings and their efficient profiles, this is so good that cooling devices are only needed in exceptional cases. In the range of accessories for WS-6000, there are

numerous possibilities for thermal management in the bottom cabinet. When installed, filter fans are effective in solving most heat problems, these can be thermostatically controlled and speed-regulated for greater safety and longer fan service life. In applications where fans cannot provide sufficient cooling capacity or should not be used, mini climate-control units are available.

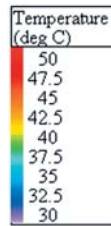
Heat management is an important subject that should not be left to chance, our technicians will be pleased to advise you on the most appropriate solutions for your applications.

Ask us! We will solve your cooling problems.



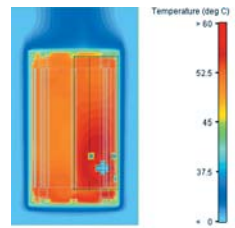
Enclosure concepts and their heat dissipation characteristics

The following simulation calculations about heat transfer are shown with reference to three different enclosure concepts. Basis of computation is an IPC encapsulated in a CC-4000 control enclosure and with 100 W heat dissipation.



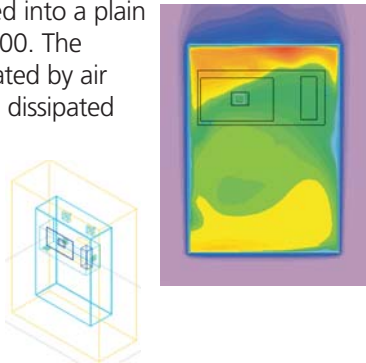
Heat dissipation

Temperature distributions. Cross sections to the left of the internal control unit fan.



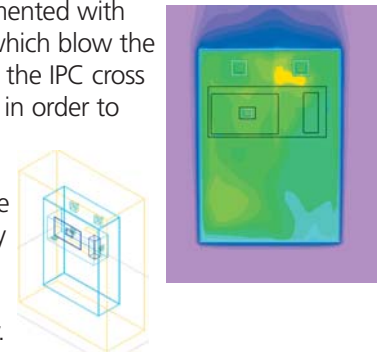
Enclosure Concept 1 Average air temperature above the IPC: 48 °C

The IPC is mounted into a plain and closed CC-4000. The enclosure is circulated by air on every side. The dissipated heat is intensely concentrated in the area above the IPC because this is where the hot air exits the IPC.



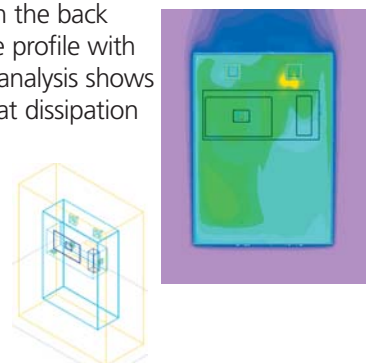
Enclosure Concept 2 Average air temperature above the IPC: 45 °C

Type 1 is complemented with two inside fans, which blow the dissipated heat of the IPC cross to the back panel in order to support an even heat spread. The inside temperature drops substantially and the temperature of the back panel rises slightly.



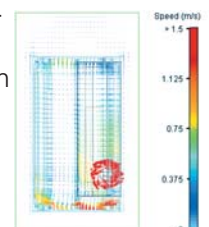
Enclosure Concept 3 Average air temperature above the IPC: 43 °C

As type 2 but with the back panel and the side profile with external fins. The analysis shows an even better heat dissipation than compared with type 2 and a measurable decline in temperature is evident.



Vector depiction of the flow speeds

The aluminum profiles in single-walled construction feature an excellent passive heat dissipation and comply with protection class IP 65. In a lot of applications active cooling devices are not necessary. In cases of increased requirements for heat dissipation the application of internal mounted and maintenance-free cooling fans is possible.



Extremely stable bottom cabinets



The bottom cabinet is the supporting basis of an industrial workstation. Its stability and rigidity is crucial in regard to the mechanical quality of the overall construction. Bernstein uses the best materials for the bottom cabinet of the WS-6000, this means that the body consists of solid, welded sheet steel side walls 2 mm thick, together with the frame profiles, this ensures maximum stability, floor guide rails and roof reinforcements also contribute to this. Two additional internal reinforcement elements are used when the worktop is made of sheet steel, this gives the WS-6000 a static load-bearing capacity of up to 150 kg. The door structure with its maintenance-free four point bar lock and a 180° opening angle (rear door with 120° opening angle) provides the necessary high level of security. However, it's not just the mechanical properties of the WS-6000 bottom cabinet that are apparent, the protection class IP 55 design, the good EMC basic

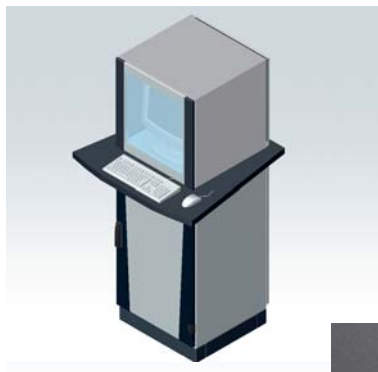
protection and the numerous equipotential bonding possibilities via earthing connections also make the sensitive electronics safer.

Thanks to its uncompromising long-term quality, the WS-6000 is ideal for use in arduous industrial environments, and provides ideal conditions for constructing workstations to your own individual specifications. For this, the Bernstein range of accessories can provide everything for configuring the interior of the WS-6000 bottom cabinet to optimally meet your needs: Mounting plates, rail systems, installation frames, various rear wall/door solutions, circuit diagram pockets etc.

All bases are also finished to ensure an attractive appearance, thanks for example to the coloured design elements on the door and inspection door. Find out more. We would be pleased to show you what's possible with the WS-6000.



Instead of a solid sheet steel door, an inspection door with a safety glass pane is also available with design panels on the door and inspection door. It is also possible to configure the rear wall as a door.



The WS-6000 is available with a fixed or roller base. A monitor fitting for enclosing PC monitors is also possible.



Bottom cabinets, bases and design strips are available on request in most RAL tones.



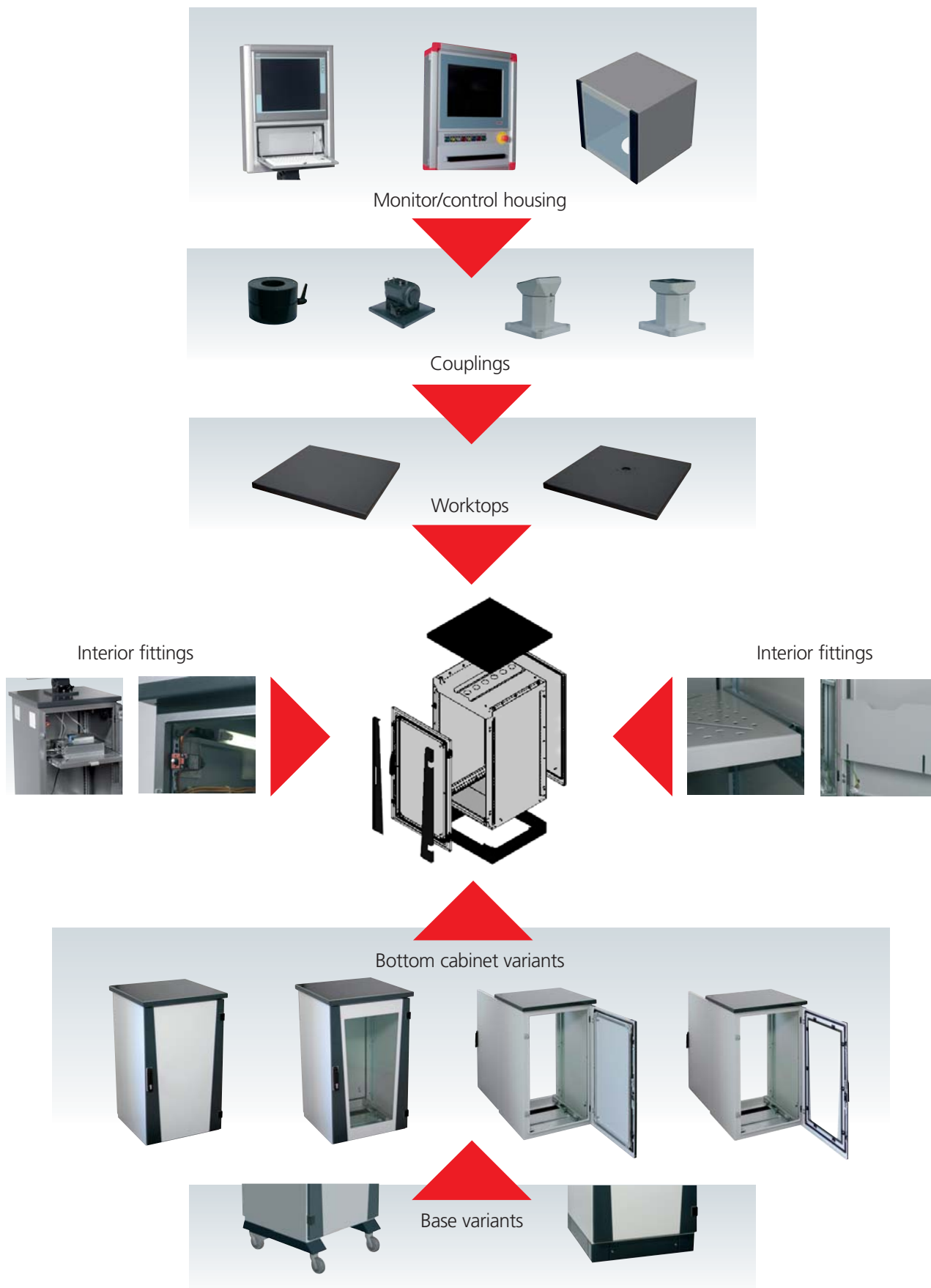
Open for your applications: Thanks to a complete range of accessories, the WS-6000 allows perfect adaptation to your requirements. When configuring the bottom cabinet, you really can choose from a full range of possibilities.



The interior of the WS-6000 can be configured specifically as required for all applications. Interior lighting, fixed shelves and circuit diagram pockets are just a few examples.

Endless possibilities

How to put together your individual WS-6000:



Control housing accessories

	Order No.
	Keyboard drawer , with fastening bolt, IP 65 closed without lock, including German keyboard. Also other languages and with lock 483 x 89 x 155 mm (19"/2 height modules)
	Keyboard drawer same as 980.6496.000 but inclined through 20° 483 x 134 x 155 mm (19"/3 height modules)
	Fold-down keyboard panel made of coated steel plate similar to RAL 9006, dimensions: 483 x 249 x 50 mm. IP 54 open (without keyboard)
	Mouse pad , angle adjustable, Mouse holder. Coated similar to RAL 9006. No mechanical working is needed on housings with a side handle rail (the adapter kit 980.6489.000 is required for CC-3000 without a side handle rail)
	Clipboard , for holding e.g. production documents (DIN A4) on the housing. Similar to RAL 9006 coated sheet steel. No mechanical working is needed on the housing (the adapter kit 980.6489.000 is required for CC-3000 without a side handle rail)
	Front panel interface cover single 942.1283.000 metal, modular attachment possible thanks to various lockable inserts. Plastic version available on request double 942.1306.000
	Interface inserts 942.1284.000 2 x USB 2.0 Type A with 0,7 m cable and plug
	2 x USB 2.0 Type A shielded 942.1300.000
	Earthed socket outlet 250 V 942.1307.000
	1 x Sub-D9/1 x Sub-D15, socket/socket 942.1308.000
	1 x Sub-D9/1 / 1 x Sub-D25, socket/pin 942.1310.000
	1 x RJ45/USB BF-A/Sub-D9 942.1311.000
	Flat dummy panel 942.1312.000
	Other inserts available on request
	Single USB interface 942.1319.000 with captive cap protection type IP 65. Can be installed in a 22.5 mm pushbutton hole on the housing or in the front panel
	Single RJ-45 interface 980.6519.000 with captive cap protection type IP 65. Can be installed in a 22.5 mm pushbutton hole on the housing or in the front panel

Coupling components

	Order No.
	WS-coupling 78 101.4100.001 Rotary coupling. Rotary angle 90° Left and right stop. Locking possible with clamping lever. 78 mm high
	WS-coupling 140 101.4100.002 same as 101.4100.001, but 140 mm high
	WS rotary incline coupling 101.6329.000 Rotary angle 300° with stop. Incline steplessly adjustable from 0-30°
	Base bracket coupling 101.5167.000 Rotary angle 300° with stop
	Angled base bracket coupling 101.5168.000 Rotary angle 300° with stop. Fixed incline of 15°

Bottom cabinets

Versions incl. roof reinforcement, 4 OPTIMA inner profiles, 3-part base plate, 2 floor guide rails, front door opening 180°, (rear door 120°), right stop, cabinet RAL 7035, worktop and design strips in RAL 7016, welded side walls. Row mounting on request.

	Height	Art. No.
	Design door 1,000 mm rear wall screwed 900 mm	WS-616 WS-696
	Design inspection door 1,000 mm 900 mm rear wall screwed (inspection pane ESG safety glass)	WS-616-ST WS-696-ST
	Design door front 1,000 mm and metal door rear 900 mm	WS-6160 WS-6960
	Design inspection door front 1,000 mm 900 mm metal door rear (inspection pane ESG safety glass)	WS-6160-ST WS-6960-ST

Worktop RAL 7016

(other colours on request)

	Material	Machining	Art. No.	Order No.
	Sheet steel	①	WS-201 B	
		②	WS-201 BX	
	Wood, small	①	WS-202 H	
	Wood, small	②	WS-202 HX	
	Wood, large	①	WS-203 H	
	Wood, large	②	WS-203 HX	
Wood worktops are plastic-laminated particle boards				
① unworked				
② worked as per customer's specifications				
Handle,				
installation size 330 mm			GR-4300	980.6544.000
installation size 430 mm			GR-4400	980.6545.000

Base RAL 7016


(other colours on request)

	Art. No.	Order No.
 Base stand 100 multi-part complete, 600 x 100 x 550 mm	SO-1150-WS	
 Base stand 200 multi-part complete, 600 x 200 x 550 mm	SO-2250-WS	
 Base stand 50 one-part including cable infeed on rear, 600 x 50 x 550 mm	SO-6506-WS	
 Base panel with cut-out 340 x 50 mm and push-in brush strips for the cable infeed	SO-1030-WS	980.6522.000

Lock systems

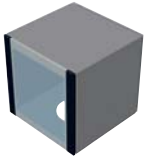
	Art. No.
 Standard escutcheon Two-way key bit 3 mm cpl. Escutcheon, complete with lock and key catch	SV-920
 Swivel lever handle without actuator/ without cover please select actuator required	SV-5341
 Swivel lever handle without actuator/ with cover please select actuator required	SV-5343
 Swivel lever handle E1 cpl, Swivel lever complete with E1 lock	SV-5348
Lock system actuator Cylinder with synchronous locking EK 333	SV-5400
Cylinder non-synchronous locking	SV-5401
3 mm two-way key bit	SV-5402
5 mm two-way key bit	SV-5403
6 mm square	SV-5404
7 mm square	SV-5405
8 mm square	SV-5406
6,5 mm Cnomo triangle	SV-5407
7 mm triangle	SV-5408
8 mm triangle	SV-5409
Daimler-Chrysler	SV-5410
Radial pin	SV-5411
Pushbutton	SV-5412
Polyamide, dummy plug	SV-5413

Base accessories

	Art. No.	Order No.
 Roller base on castors including cross-members and 4 steering castors 200 mm high	SO-2950-WS	980.6523.000
 Levelling feet including fastening, for fastening to SO-11 and SO-22, galvanised	SO-2800-WS	980.6524.000
 Push-fit brush strip 2 ea. 430 mm	BÜL-430	980.6584.000

Monitor housing RAL 7035/7016

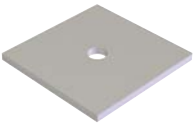
(other colours on request)



Monitor housing

with welded side walls, protection type IP 55, front design door (unlockable from the inside) and rear door (120° opening), inspection pane ESG safety glass, 4 ea. OPTIMA inner profiles, perforated unit base. Prepared for WS-100 and WS-101.

Depth 500 mm	WS-665	980.6540.000
Depth 600 mm	WS-666	980.6541.000



Spacer plate

for monitor housing, laminated particle board, prepared for WS-101 and monitor housing, with cable gland Ø 60 mm, RAL 7035, (always required for the monitor housing)

Art. No. Order No.



Rotary ring

for carrier plate, required with rotary monitor housing. Height 14 mm, rotary angle 360°

Art. No. Order No.

WS-101 980.6543.000

Interior fixtures

System mounting rails

Description	PU	Art. No.	Order No.
System mounting rails, 490 x 74 x 21 mm, side mounting, galvanised	4 ea.	ML-490	980.6525.000
System mounting rails, 592 x 74 x 23 mm, horizontal top mounting, galvanised	4 ea.	ML-590	980.6526.000
System mounting rails, 550 x 74 x 23 mm, horizontal intermediate mounting, low or high fitting, galvanised	4 ea.	ML-550	980.6527.000
System mounting rails, 592 x 74 x 23 mm, betw. ML, galvanised	4 ea.	ML-570	980.6528.000
System bracket for securing various rail material on the rear side, 50 x 65 x 54 mm, galvanised	10 ea.	ML-6670	980.6529.000
Spacer, 2 mm, for all ML rails, galvanised	50 ea.	ML-6660	980.6530.000
Sheet metal screw DIN 7976, BZ 4.8 x 9.5 mm, galvanised	100 ea.	ML-6661	980.6531.000
Saucer-head screw DIN 603, M8 x 16 mm, short square, galvanised	50 ea.	ML-6663	980.6532.000
Captive nut M6, galvanised	100 ea.	ZB-5080	980.6533.000
Captive nut M5, galvanised	100 ea.	ZB-5085	980.6534.000
LS side-hole rails, 483 x 34 x 12.5 mm, for cabinet depth 600 mm, galvanised	6 ea.	LS-550	980.6535.000
Door-hole rails, 491 x 30 x 22.5 mm, for door width 600 mm, galvanised	6 ea.	LS-475	980.6536.000
Cable grip rail, 40 x 40 x 515 mm, angle profile 40 x 40 x 4 mm, galvanised	1 ea.	KS-610	980.6537.000
CPO profile rail, light version, C35 x 18 x 460 mm, for cabinet width 600 mm, galvanised	1 ea.	CPO-600	980.6538.000
CPO profile rail, light version, C35 x 18 x 496 mm, for cabinet width 600 mm, galvanised	1 ea.	CPO-496	980.6539.000



ML-490



ML-590



ML-550



ML-6660



ML-6670



LS-550



KS-610



CPO-600

Mounting plates

(galvanised, d = 2.5 mm)



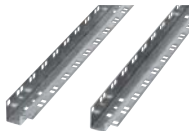
	Height	Art. No.	Order No.
Mounting plate	800 mm	MP-610	980.6546.000
including fastening material	900 mm	MP-609	980.6547.000
Mounting plate 800 mm for cabinet height 900 mm			
Mounting plate 900 mm for cabinet height 1,000 mm			



Part mounting plate	198 mm	TM-620	980.6548.000
	398 mm	TM-640	980.6549.000
for cabinet width	498 mm	TM-645	980.6550.000
600 mm, fastening possible only in conjunction with ML 490 (optional)	598 mm	TM-660	980.6551.000

19" inner profiles

(galvanised)



Height	Art. No.	Order No.
1,000 mm	LS-1910	980.6552.000
900 mm	LS-1909	980.6553.000

Printer insert



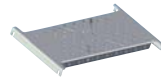
	Art. No.	Order No.
RAL 7035	ES-6660	980.6554.000
incl. telescopic rails		

Circuit diagram pockets

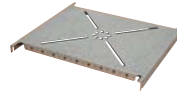


Width	Art. No.	Order No.
DIN A3 for door width	ZB-5630	980.6555.000
600 mm, sheet metall RAL 7035		
DIN A4	ZB-5333	980.6556.000
Sheet metall RAL 7035		
DIN A4 self-adhesive	ZB-5026	980.6557.000
Polystyrene		
DIN A4 self-adhesive	ZB-5036	980.6558.000
as a plastic pocket		

Shelves RAL 7035



	Art. No.	Order No.
fixed , with perforation and cross-holes	ZBP-660	980.6559.000
Load-bearing capacity 30 kg		



pull-out , including telescopic rails, mounting profiles and handle, with perforation and cross-holes	ZBA-660	980.6560.000
Load-bearing capacity 30 kg		

Equipotential bonding

(Please always select. No earthing strip in standard)



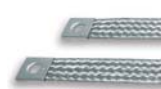
	Art. No.	Order No.
Green/yellow, cable lugs M8 on both sides, Quality NYAF (Ho7 V-K)		

Earthing strip 4 mm, 200 mm long	EB-204	980.6561.000
---	--------	--------------

Earthing strip 16 mm, 200 mm long	EB-216	980.6562.000
--	--------	--------------

Earthing strip 16 mm, 300 mm long	EB-316	980.6563.000
--	--------	--------------

Earthing strip 25 mm, 300 mm long	EB-325	980.6564.000
--	--------	--------------



Braided ribbon cable, Cu tin-coated, connections on both sides for M8

Ribbon cable 16 mm, 200 mm long	EB-216-EMV	980.6565.000
--	------------	--------------

Ribbon cable 16 mm, 300 mm long	EB-316-EMV	980.6566.000
--	------------	--------------

Ribbon cable 16 mm, 500 mm long	EB-516-EMV	980.6567.000
--	------------	--------------



Busbars	PE-600	980.6568.000
E-CE 30/5 including rail holder, Length suitable for 600 mm cabinet width		

Climate control

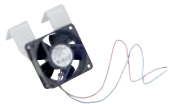
Order No.



Heat sink rear panel
Custom-made if required.
Please contact us



Internal fan set
24 V, 40 m³/h
Higher power ratings
or 230 V units on request



Fan mounting bracket set
2 brackets in set for axial
or radial fan, RAL 7035



Filter fan set PF1000
230 V filter fan + discharge filter
24 m³/h, IP 54. Higher power ratings
or 230 V units on request



Climate control unit
230 V, 320 W, L35L35
270 x 520 x 110 mm, 13,3 kg

230 V, 400 W, L35L35
520 x 340 x 110 mm, 14,8 kg

Higher power ratings or 24 V units on request

Lighting

Art. No.

Order No.



System lamp SL
Lamp 14 W, 230 V,
50 Hz with earthed
socket outlet

SL-027

980.6571.000



Magnetic lamp
Lamp with magnetic base
for free positioning
with 3 m connecting cable,
11 W, 230 V, 50 Hz



Mains connecting cable SL-170
2 m, orange, 3-strand,
with plug

980.6572.000



**Switching line with
door contact switch**
1 m, orange, with plug
suitable for the lamps

980.6573.000

Door latch



for mounting on
tubular door frame

Art. No.
ZB-5335

Order No.
980.6569.000

System sockets



Socket strip
„adaptus“
5x with switch

Art. No.
SD-2405

Order No.
980.6576.000

5x with overvoltage
protection

SD-2405-ÜS

980.6577.000

7x with switch

SD-2507

980.6578.000

3x with switch

SD-2403

980.6575.000



System socket
with miniature fuse,
quick-action cable connection,
1x VDE (earthing contact)
for TS 35 (Germany)

SD-3500

980.6579.000

Socket
with miniature fuse,
with quick-action connection,
with 1x CEBEC
for TS 35 (Switzerland)

SD-3501

980.6580.000

System socket
with miniature fuse,
quick-action cable connection
1x for TS 35 (USA/Canada)

SD-3504

980.6581.000



Earthed socket outlet
grey (downstream of main
current) for TS 35

SD-3600

980.6582.000

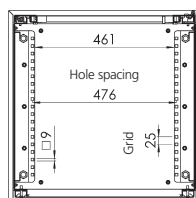


Earthed socket outlet
yellow with LED
(upstream of main current)
for TS 35

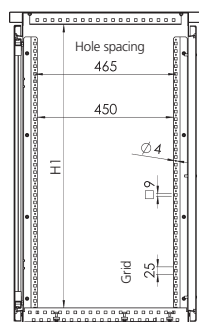
SD-3601

980.6583.000

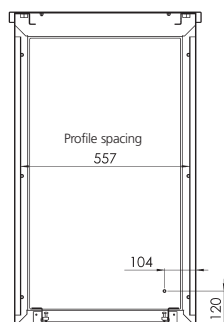
Bottom cabinets with sheet metal worktop



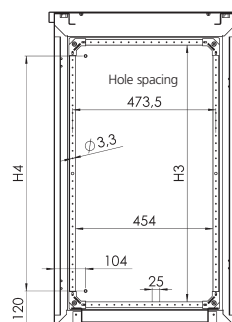
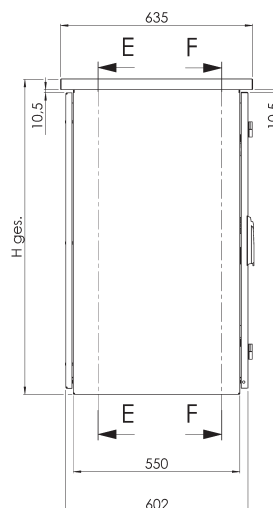
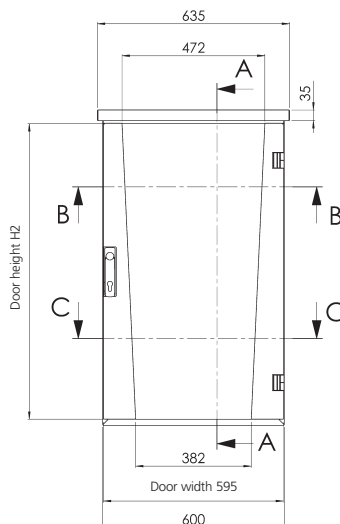
Section view B-B



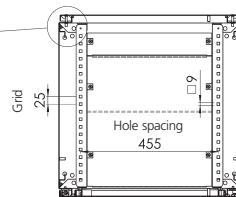
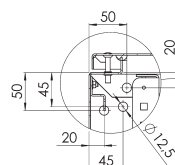
Section view A-A



Section view E-E



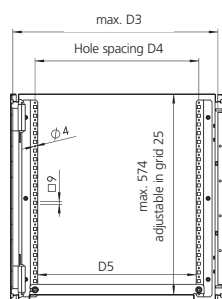
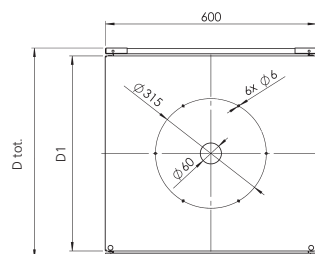
Section view F-F



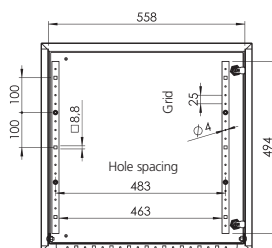
Section view C-C

	WS-696	WS-616
H tot.	940	1040
H1	835	935
H2	876	976
H3	748	848
H4	676	776

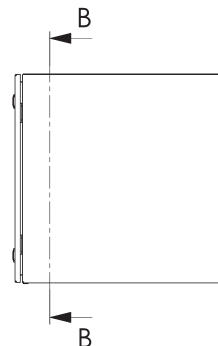
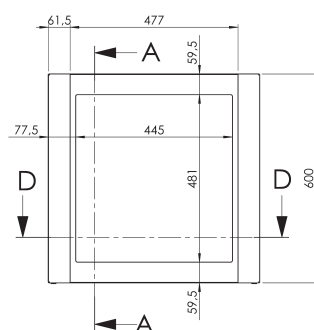
Monitor housing



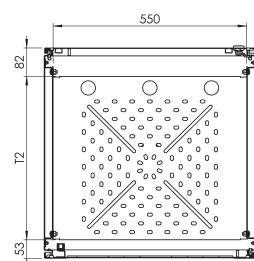
Section view A-A



Section view B-B



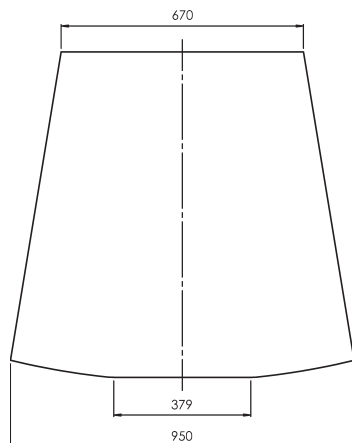
Back



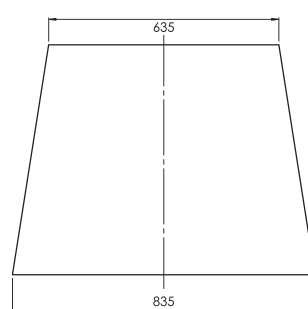
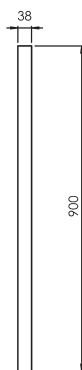
Section view D-D

	WS-666	WS-665
D tot.	600	500
D1	560	460
D2	469	369
D3	588	488
D4	465	365
D5	450	350

Wood worktop



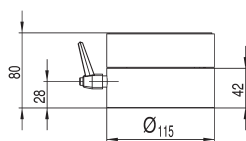
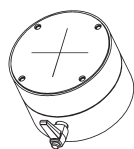
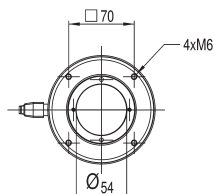
WS-203 H



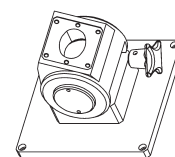
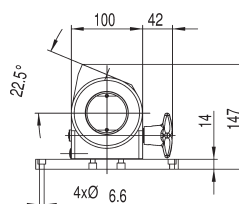
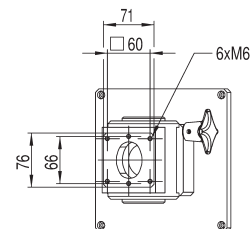
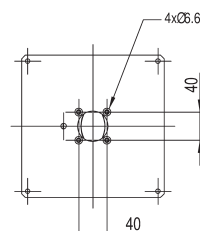
WS-202 H



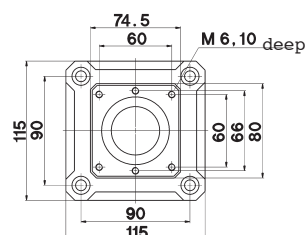
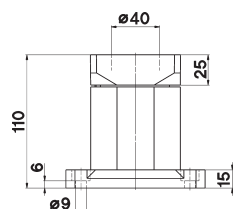
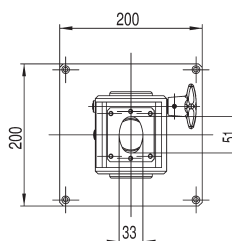
Couplings



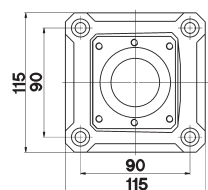
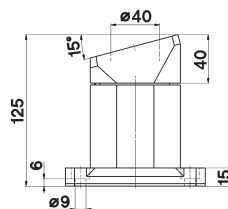
Rotary coupling
Art. No.: 101.4100.001



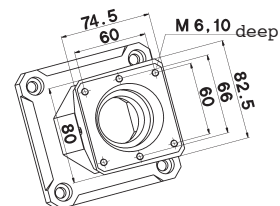
Rotary incline coupling
Art. No.: 101.6329.000



Base bracket coupling
Art. No.: 101.5167.000



Angled base bracket coupling
Art. No.: 101.5168.000



More safety and ergonomics during operation and observation

Modular control housing



■ CC-4000



■ CC-4000 SL



■ CC-3000



■ Bernstein carrier systems

International Headquarters

Germany

Bernstein AG

Tieloser Weg 6
D-32457 Porta Westfalica
Phone +49 571 793-0
Fax +49 571 793-555
info@de.bernstein.eu

Denmark

Bernstein A/S

Sindalsvej 30
DK-8240 Risskov
Phone +45 7020 0522
Fax +45 7020 0177
info@dk.bernstein.eu

Italy

Bernstein S.r.l.

Via del pero 12a/b
I-24040 Levate (BG)
Phone +39 035 4549037
Fax +39 035 4549647
info@it.bernstein.eu

Austria

Bernstein GmbH

Kurze Gasse 3
A-2544 Leobersdorf
Phone +43 2256 62070-0
Fax +43 2256 62618
info@at.bernstein.eu

Switzerland

Bernstein (Schweiz) AG

Steinhaldenstrasse 14
CH 8954 Geroldswil
Phone +41 44 775 71 71
Fax +41 44 775 71 72
info@ch.bernstein.eu

France

Bernstein S.A.R.L.

Tieloser Weg 6
D-32457 Porta Westfalica
Phone +33 1 64 66 32 50
Fax +33 1 64 66 10 02
info@fr.bernstein.eu

BeNeLux

Bernstein BV

Tieloser Weg 6
D-32457 Porta Westfalica
Phone +31 314 366088
Fax +31 314 361256
info@nl.bernstein.eu

Great Britain

Bernstein Ltd (UK)

Unit 1, Westgate Park
Tintagel Way
Westgate
Aldridge
West Midlands
WS9 8EX
Phone +44 1922 744999
Fax +44 1922 457555
info@uk.bernstein.eu

China

Bernstein Safe Solutions (Taicang) Co., Ltd.

North 38, Dongting Road,
Taicang City
Development Area,
Taicang 215400
Jiangsu Province, P.R. China
Phone +86 512 81608180
Fax +86 512 81608181
info@bernstein-safesolutions.cn

Hungary

Bernstein Kft.

Fehér utca 10
1106 Budapest
Phone +36 1 434 2295
Fax +36 1 434 2299
info@hu.bernstein.eu

www.bernstein.eu