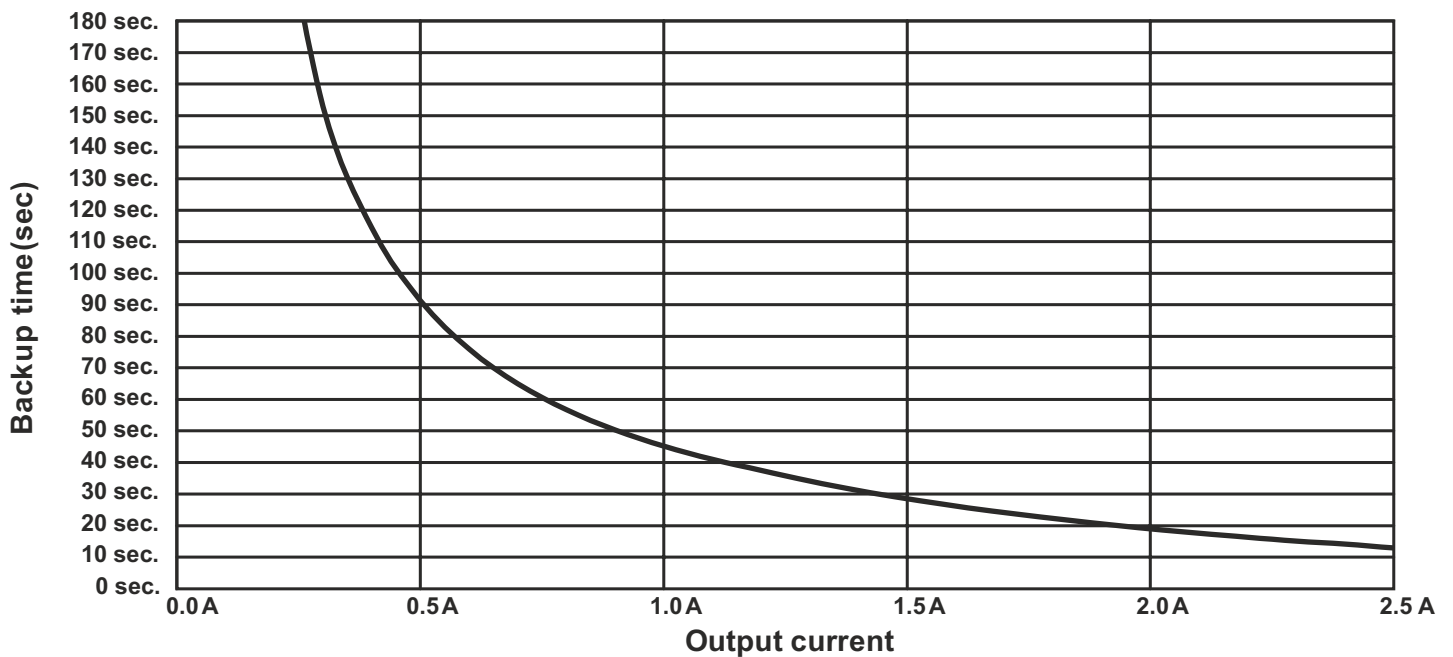


DIN RAIL UPS

- Regulated voltage at backup
- Supercaps for energy storage
- Maintenance-free
- High cycle stability > 500 000
- Charge time <60 sec at maximum charge current
- Extended temperature range -20...+70 °C
- Compact design
- Active reverse polarity protection
- Power Fail signal via relay, RS232 connection
- Intelligent charge sharing



Technical features

Input voltage	24 VDC (22.5...30 VDC)
Input current	3.5 A
Output power	70 W
Output voltage battery mode	24 VDC $\pm 2\%$ regulated
Output voltage normal mode	$V_{in} - 0.2$ V at 100% load
Output current	3 A
Output ripple	≤ 40 mV
Efficiency	94% ($V_{\text{Supercap}} 9.5\text{V}, I_{\text{out}} 1.25\text{ A}$)
Charge current	Depending on load up to 6.2 A CC (V_{Supercap})
Charging method	CC/CV
Storage type	Supercaps 4x 100 F
Charging time	<60 sec at maximum charge current @ 4x 100 F
Backup time	See diagram
Protection	Overcurrent protection – Non LATCH Active reverse polarity protection



RS232

01 DCD signal

05 GND

06 DSRsignal (Low=Cap>90%; High =Cap <90%)

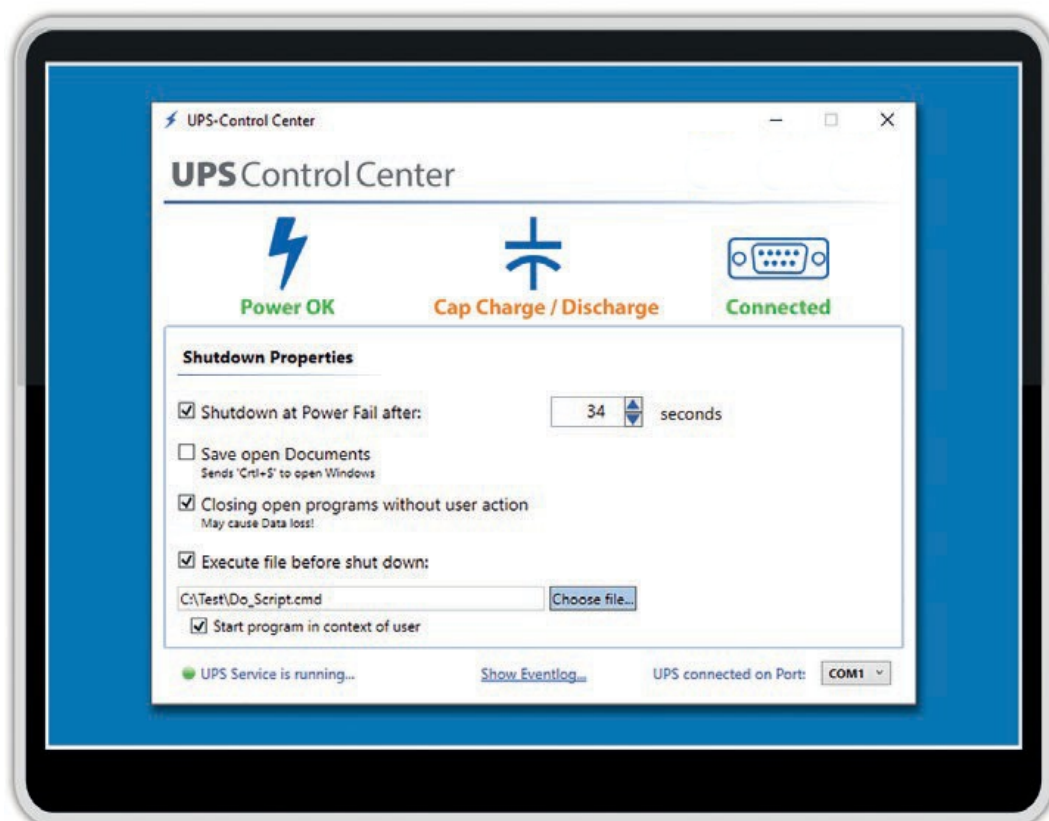
07 RTS signal (Supply voltage, max. 12 V)

08 CTSsignal (Low = Power Fail; High = Power OK)

MANAGEMENT SOFTWARE

The software runs under the following systems:

- Windows® 7 PRO/EMB - Windows 10 PRO / IOT
- .NetFramework4.5 or higher
- Serial Com-Port



- **Shutdown at ,Power fail' after:** When enabled, the operating system shuts down after the set period of time. By clicking on the pull-down arrow the preset time can be selected in 30-second increments or set manually in the format **hours:minutes:seconds** by the user.
- **Save open documents:** When enabled, open documents are saved if the program supports the keyboard command „Str +S“.
- **Closing open programs without user action:** Choosable, if one of the checkboxes above is activated. In case of activated, running programs will be closed (may cause data loss) if they don't close automatically during shutdown.