



4-Port IP50 Serial Server

■ ■ SE5404D

- 15KV ESD protection for serial signals
- 2x 10/100Mbps Fast Ethernet full duplex auto negotiation
- 4-port RS-232/RS-422/RS-485, baud rate up to 921 Kbps
- Rigid IP50 Metal housing, DIN-Rail and wall mount support
- Support RAW TCP Server/ TCP Client / UDP / Virtual COM / Tunneling Modes
- Configuration: Built-in Web Server /Serial Console/ Telnet / Windows-based Utility
- Monitor, manage and control industrial field devices remotely

Make Serial Devices Ready to the Network

The Industrial Serial Server SE5404D is a 4-port gateway between Ethernet (TCP/IP) and serial signal communications. It allows almost any serial device to be connected to a new or existing Ethernet network.

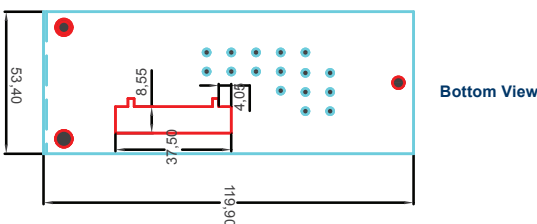
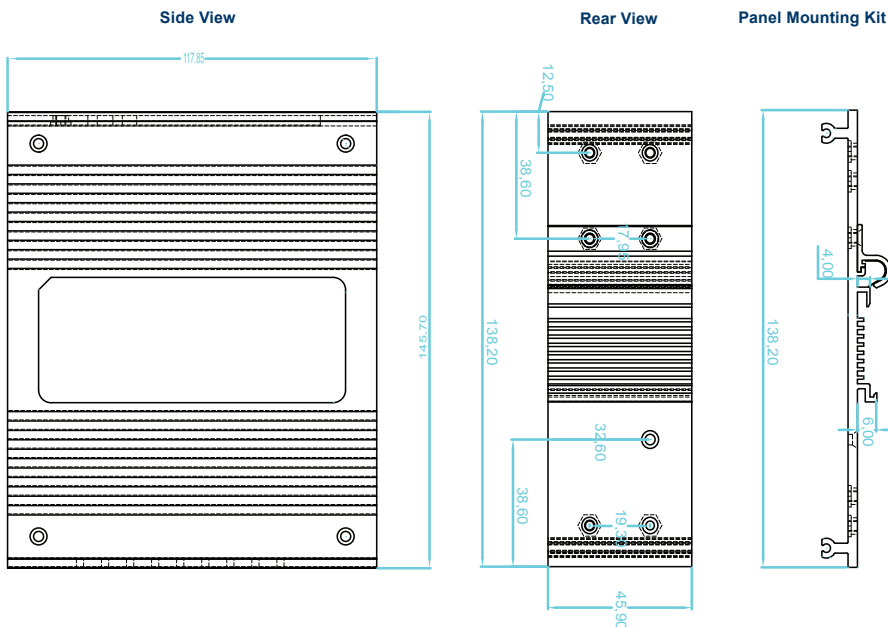
By encapsulating serial data and transporting it over to Ethernet, SE5404D offers full-duplex, bi-directional data transmission transparent between serial port and Ethernet network.

Easy to Use

Flexible configuration options enable this unit to be setup over Ethernet by Telnet, Web browser, Serial Console, or other utilities. Packed in a rugged metal housing for DIN rail or wall mount with 9~48VDC wide power input range, SE5404D is ideal for almost any industrial and manufacturing automation. ATOP Virtual COM software provides existing Windows based applications to access a serial device by mapping to a remote serial server via Ethernet.

Specially Designed for Automation Fields

In industrial and manufacturing automation fields, SE5404D is used as a field device to connect Ethernet through TCP/IP protocol directly. It is also specially designed for conjunction with PLCs, HMIs, Barcode Scanners, Data Terminals, Electronic Kanbans, Shop Floor Control Systems, and Pick-to-Light Systems.



Dimensions (unit = mm)

4-Port IP50 Serial Server



Specifications	
Ethernet	
Compliance	IEEE802.3
Network Interface	10/100 Mbps Fast Ethernet
Port	2
Transmission Rate	10/100 Mbps Auto-detection
Connector	RJ-45
Auto MDI/MDI-X	Yes
Link Mode	
TCP Server	Up to 4 connections or Virtual COM mode
TCP Client	Up to 2 destination or Virtual COM mode
UDP	Up to 8 destination
Serial	
Interface	RS-232/422/485 Software selectable(SE5404D) RS-422/485 Software selectable(SE5404D-S5/SE5404D-Sis)
Ports	4 Ports
Baud Rate	300bps~921.6kbps(SE5404D/SE5404D-S5) 300bps~230kbps (SE5404D-Sis)
Parity	None, Odd, Even, Mark, Space
Data bits	5, 6, 7, 8
Stop Bit	1,2
Flow Control	None, Software:Xon/Xoff,Hardware:RTS/CTS
Protection	15KV ESD / 2KV Magnetic Isolation (SE5404D-Sis only)
Connector	9-Pin lockable D-Sub / 5-Pin lockable Terminal Block
Power	
Input	9-48DCV, 0.65A max
consumption	Max. 5.85W
LED	
Indicator	COM, LAN, RUN
Approval	
EMC	CE Class A, FCC Class A
Protection	IP50 Rated IEC/EN60529
Vibration	IEC60068-2-64
Shock	IEC60068-2-27
Free-fall	IEC60068-2-32(ISTA Test Procedure 2A)
Environment	
Operating	0°C~70°C(32°F ~158°F)
Storage	-40°C~85°C(-40°F ~185°F)
Humidity	5%~95% Non-condensing
Dimension	
WxHxD	53.4mm x 145.7mm x 119.9mm
Physical	
Weight	900g
Installation	DIN-Rail mounting or Wall mount (optional)
Warranty	5 years
MTBF	
Preceding	TBD
Software	
Configuration	Web Page / Telnet / Serial console / Windows Utility
Virtual COM	Windows & Linux port redirection software
Support Protocol	ICMP, TCP/IP, UDP, DHCP Client, NTP, DNS, SNMP, HTTP, Telnet, SMTP

Ordering Information	
SE5404D	P/N:1P1SE5404D0001G 4-Port Serial Device Server, DIN-Rail, D-Sub
SE5404D-S5	P/N:1P1SE5404D0003G 4-Port Serial Device Server, DIN-Rail, Terminal Block
SE5404D-Sis	P/N:1P1SE5404D0002G 4-Port Serial Device Server, DIN-Rail, Terminal Block, 2KV Magnetic Isolation
Optional Accessories	
Wall Mount Kit	P/N:202EH731000003G Black metal wall mount kit
Console Cable	P/N:50891971G 90cm RJ-45 to DB9 female console cable
Grounding Cable	P/N:59906491G 90mm copper woven grounding cable
Conductive	P/N:201EH731000005G
DIN-Rail Kit	Conductive silver metal DIN-Rail Kit
AD17-24C(US)	P/N:70100000000029G
Power Adapter	US 2P AC100~240V/DC24V 0.63A adapter for terminal block
AD17-24D(EU)	P/N:70100000000030G
Power adapter	EU 2P AC100~240V/DC24V 0.63A adapter for terminal block

Atop Technologies, Inc.

TEL : +886-3-5508137
 FAX : +886-3-5508131
 sales@atop.com.tw
 http : //www.atop.com.tw

Design and specification are subject to change without notice.

All product names referenced herein are registered trademarks of their respective companies.

